

**Autodesk®**

Authorized Training Center  
Authorized Certification Center

Autodesk® Revit®  
Architecture

Autodesk® Revit®  
Structure

Autodesk® Revit®  
MEP

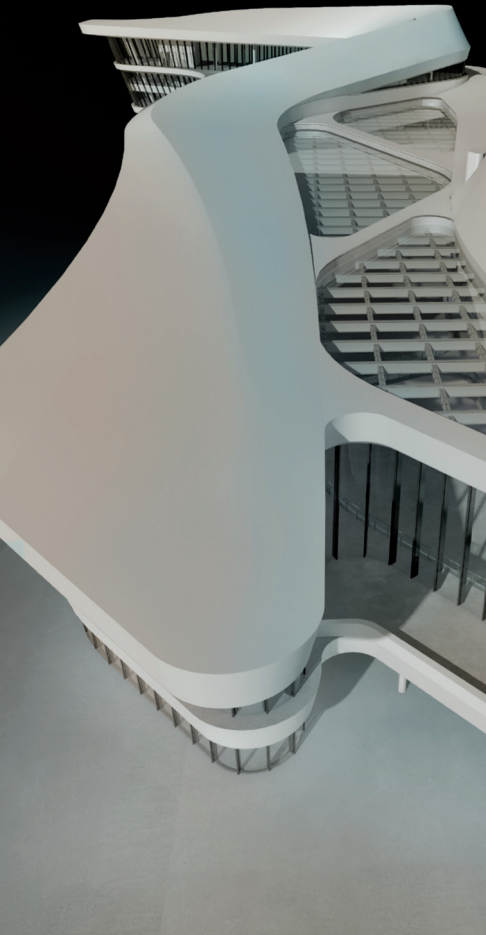
## Revit Platform 2012 Family training (2 dagen)

### DAG 1

- Interface Family Editor
- Family Templates
- Family categoriën
- Type / Instance parameters
- Reference Planes
- Solid / Void tools

### DAG 2

- Shared parameters
- Linken van parameters in meetstaten
- Custom object families maken
- Custom annotation families maken



Voor meer informatie over deze training, neem contact op met Inge Claessens op het nummer +32 (0)52/45 72 62

i-Theses BVBA  
Spinnerijstraat 14  
9240 Zele  
T: +32 (0)52 45 72 62  
F: +32 (0)52 45 72 62

[info@i-theses.com](mailto:info@i-theses.com)  
[www.i-theses.com](http://www.i-theses.com)

Vereiste voorkennis: Basisprincipes Revit Architecture, Revit Structure of Revit MEP

**i-Theses®**